

RIBA 3 Axonometric View Looking South East



New planting/
habitat

Ramp access

Floating reedbed

Step access and
seating pocket

New planting
mix

Timber top
seating

Reading room
with play

Ramp access

Supercrossing

Step access and
seating pocket

Seating pocket

Ramp and step
access

Eastern Entrance

Mural wall

Garden with habitat hotels to offer nesting areas and encourage wildlife biodiversity

Proposed handrails along steps and ramp

Existing retaining wall

Existing railing

Steel retaining wall

South facing seating

Floating reedbed



East entrance view looking East from Harrow Rd

Eastern Entrance

Planting along Harrow Road with powder coated high steel edging. Colour TBC. Furnitubes or equivalent

1100mm powder coated handrail. Colour TBC.

1100mm 12mm bar bow top railing. Colour TBC.

High steel edging. Colour TBC. Various heights. Furnitubes or equivalent

Pre-cast concrete steps

450mm powder coated steel edging. Colour TBC. Furnitubes or equivalent.

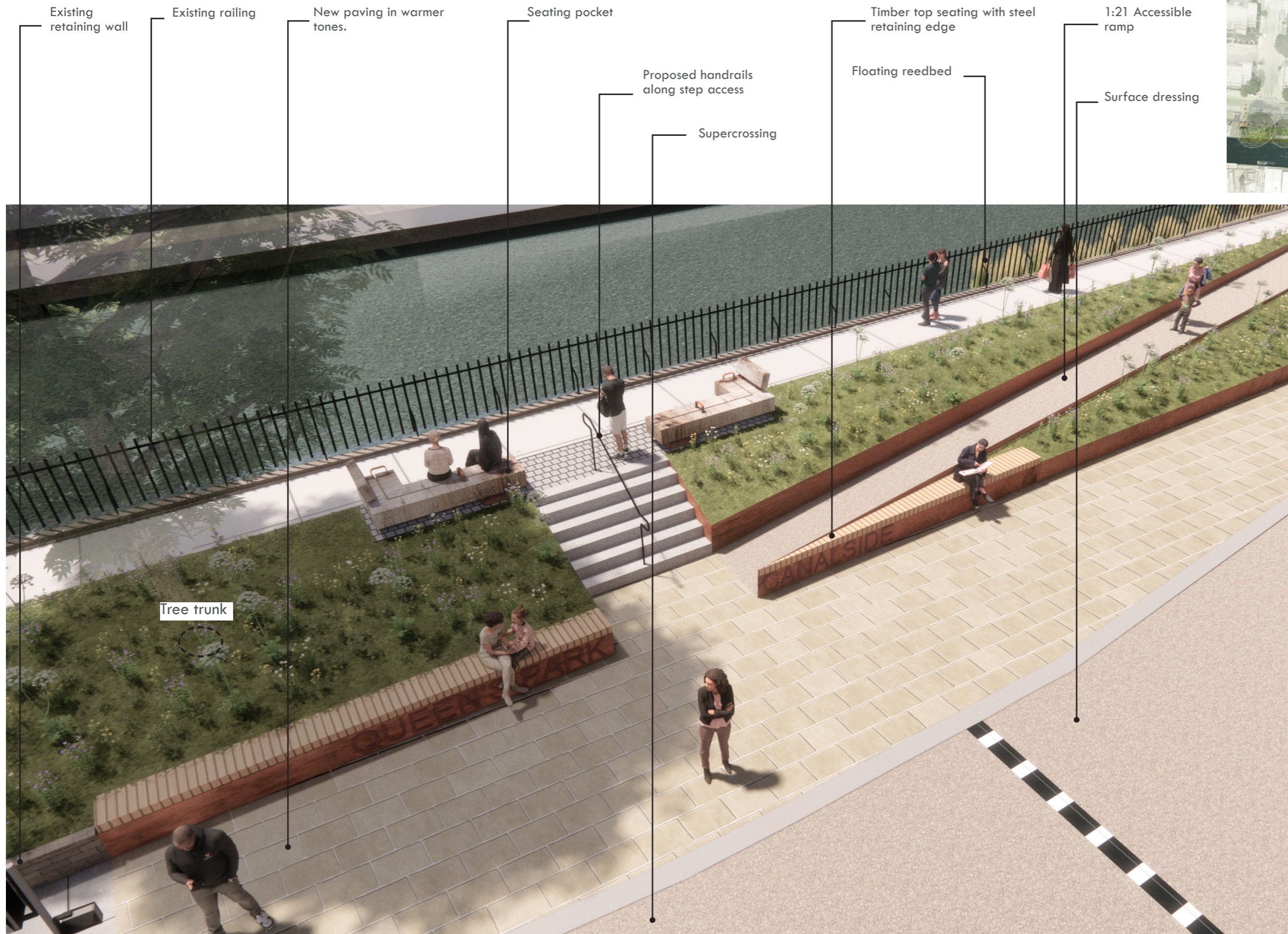
Existing retaining wall

New paving in warmer tones. Marshalls Scoutmoor yorkstone or equivalent



View looking West from Harrow Rd

Central Entrance



**Central entrance view
looking West from
Harrow Rd**

1200mm x 2460mm x 620mm L-shaped drifter bench with armrest and backrest. Colour TBC. Streetlife or equivalent.

Timber top seating with 450mm powder coated steel edging. Colour TBC. Furnitubes or equivalent.

Powdercoated steel handrail. Colour TBC. Furnitubes or equivalent

Planting with high steel edging. Various heights. Colour TBC. Furnitubes or equivalent.

450mm powder coated steel edging with inset lettering. Colour TBC. Furnitubes or equivalent.

New paving in warmer tones. Marshalls Scoutmoor yorkstone or equivalent

Surface dressing to tarmac. Buff anti-skid surface



View looking west from Harrow Rd



Western Entrance

Existing railing

Feature bug hotel

Floating reedbed

Steel retaining wall

Garden with habitat hotels to offer nesting areas and encourage wildlife, biodiversity

Existing retaining wall



Western entrance view looking West from Harrow Rd

Western Entrance

Existing retaining wall

Existing Paving

New paving in warmer tones. Marshalls Scoutmoor yorkstone or equivalent

Bespoke habitat hotel. Colour TBC. Vestre or equivalent

Steel planter. Various heights. Colour TBC. Furnitubes or equivalent

HABITATS Leaf bug hotels. Colour TBC. Vestre or equivalent

Existing railing to be restored

HABITATS Wings bug hotels. Colour TBC. Vestre or equivalent

Planting along Harrow Road with high steel edging. Various heights. Colour TBC. Furnitubes or equivalent



View looking East from Harrow Road

Upper Canalwalk View Looking East

Existing Paving

Steel planter with new planting along Canal walk. Various heights. Colour TBC. Furnitubes or equivalent

Resin bound seashore gravel ramp up to Canaside walk. DCM surface or equivalent

1500mm x 1800mm Concrete paving, double excel stippled grijs with steel frame. Hardscape or equivalent

Bespoke habitat hotel. Colour TBC. Opportunity for local artist

Existing railing to be restored

Existing canal wall

Resin bound seashore gravel buffer along the canal wall. DCM surface or equivalent



View looking East from Harrow Rd

Upper Canalwalk View Looking East

600mm x 4000mm drifter bench with armrest and backrest. Colour TBC. Streetlife or equivalent



1100mm 12mm bar bow top railing. Colour TBC.

Wet pour rubber surface

Marshalls Scoutmoor yorkstone or equivalent

Balancing beams access to bespoke slide. Colour TBC. Timber play or equivalent

Existing canal wall

1500mm x 1800mm concrete paving, double excel stippled grijs with steel frame. Hardscape or equivalent

Resin bound seashore gravel buffer along the canal wall. DCM surface or equivalent



View looking West from Harrow Road

Natural stone paving to create seating area. 5 rows of 150mm x 150mm Marshalls Scoutmoor Yorkstone setts or equivalent

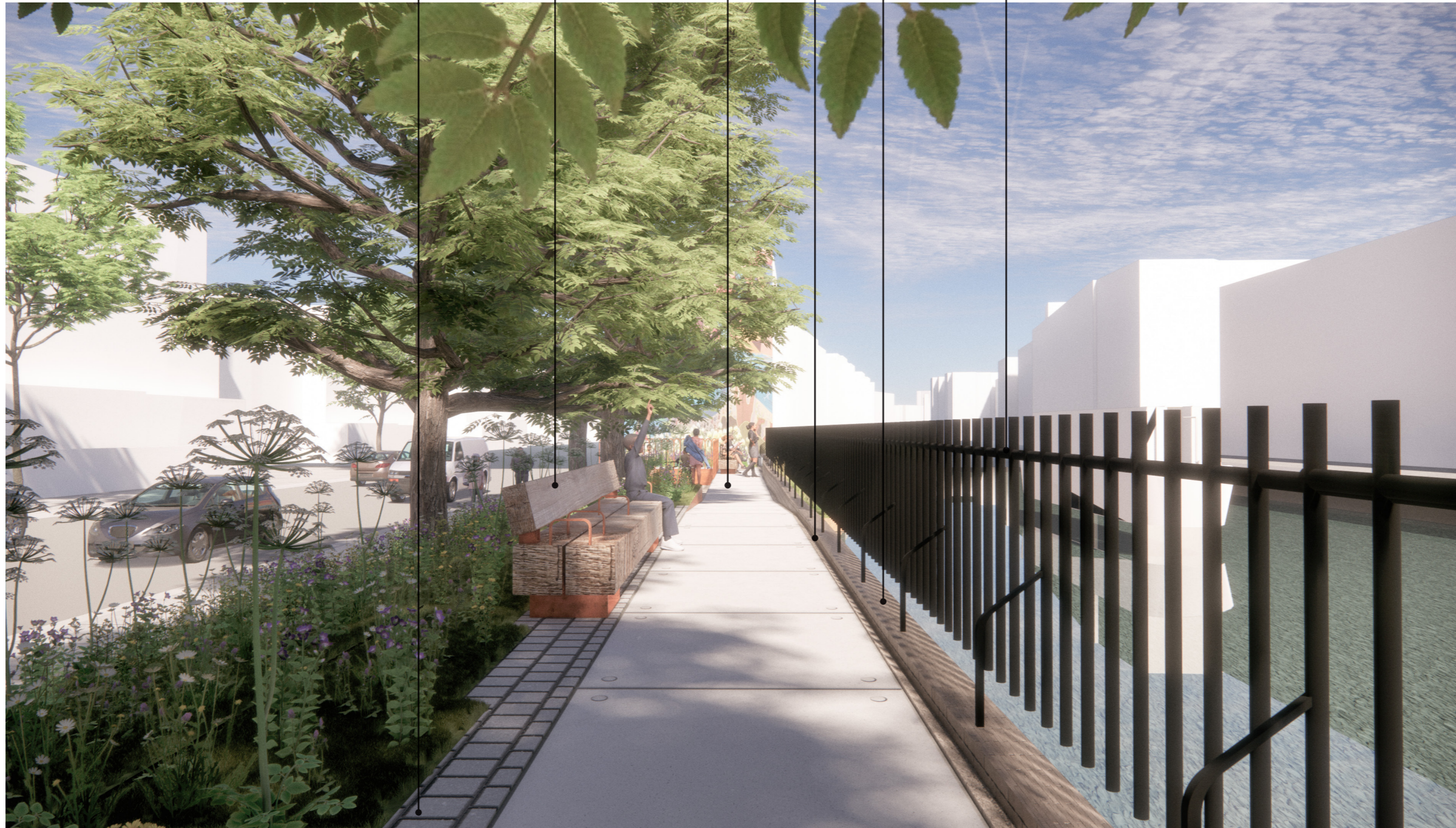
620mm x 4000mm drifter bench with backrest and armrest. Colour TBC. Streetlife or equivalent

1500mm x 1800mm Concrete paving with double excel stippled grijs with steel frame. Hardscape or equivalent

Resin bound seashore gravel buffer along the canal wall . DCM surface or equivalent

Existing canal wall

Existing railing to be restored



View looking East from Harrow Road